

# Pond Minibeasts

## Start

Is it bigger than 2 mm?  
||

**No**

water flea  
(daphnia)



water mite

**Yes**

Does it have legs?

**No**



pond snail



ramshorn snail



midge larva  
(bloodworm)

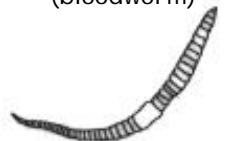
**Yes**



leech  
(moves by looping)



(moves by slithering)



pond worm

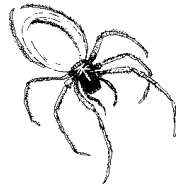
Does it live in a case?

**Yes**



cased caddis  
fly larva

**No**



water spider



water  
louse



water  
shrimp

Does it have 6 legs?

**No**

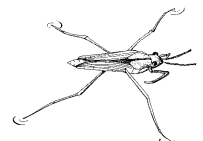
**Yes**



water  
boatman



water  
beetle



pond  
skater

Does it have a tail?

**No**

**Yes**



water beetle  
larva



water stick  
insect

Does it have 3 tails?

**No**

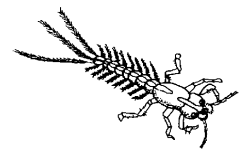
**Yes**



dragonfly  
nymph



damselfly  
nymph



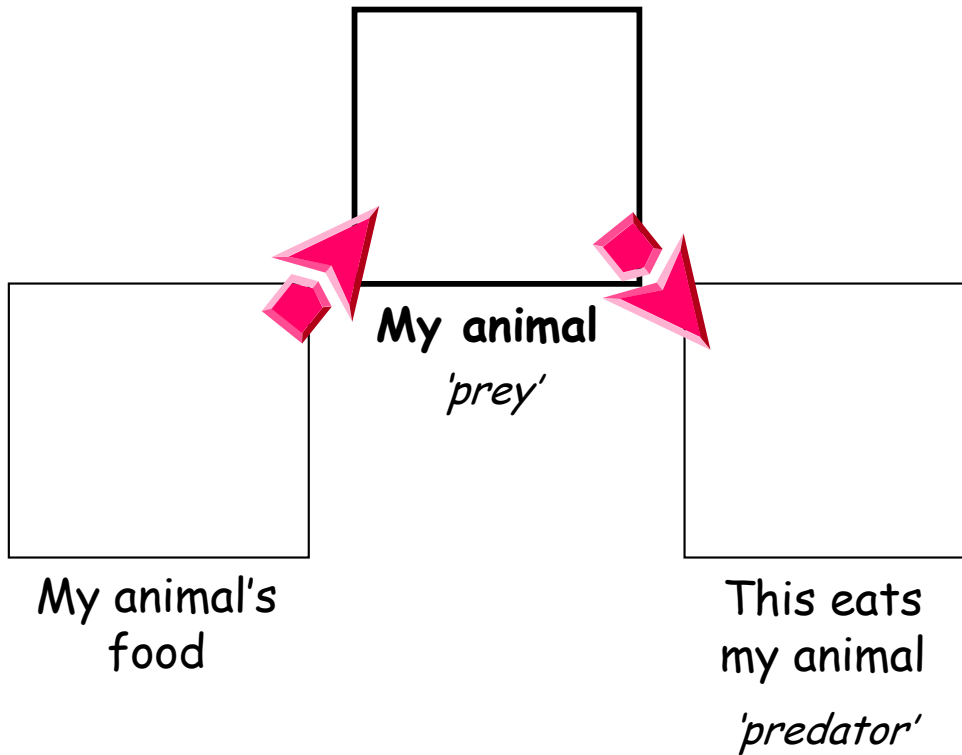
mayfly  
nymph

# Food chains

My animal eats...

- plants - *it is a herbivore*
- animals - *it is a carnivore*
- plants & animals - *it is an omnivore*
- dead things - *it is a decomposer*

My animal's food chain looks like this...



# Pond animal fact file

Name of animal: \_\_\_\_\_



LOOK carefully using the microscope!

Draw a picture of your animal in the box

Features:

• How many legs?

• How many tails?

• Does it have antennae?

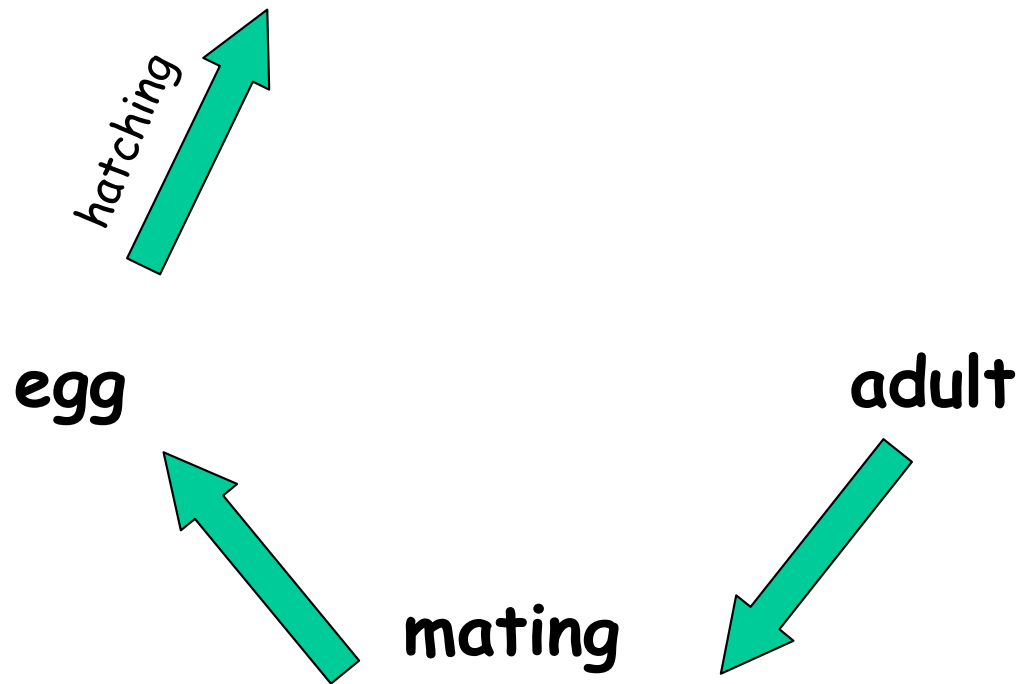
Yes No

Your name: \_\_\_\_\_

# My animal's lifecycle

Show how your animal grows using words, arrows and pictures to complete the lifecycle.

*Clues: nymph, larva, moult, change, cocoon, pupa*



*Some 'baby' minibeasts change completely when they become adults eg. caterpillars change into butterflies.*

# Adaptations

How is your animal suited to living in water?

How does your animal survive life in the pond?

- My animal moves quickly from danger
- My animal keeps still to hide from danger

1. My animal **moves** by...

- swimming
- crawling
- walking
- looping
- sliding
- wriggling

2. My animal **camouflages** (hides) itself by...

3. How does your animal **breathe** in water?

*(all animals need oxygen to live)*

- gills** (water 'lungs')
- breathing tube** (snorkel)
- collects an air bubble** (scuba diver)
- comes to the surface** (it needs air)
- breathes through its skin**



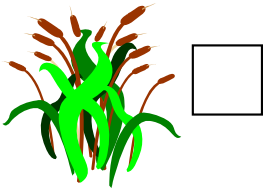
Your name: .....

My drawing of a .....

## What does your animal eat?

1.

My animal eats plants



*It is a herbivore*

My animal eats other animals



*It is a carnivore*

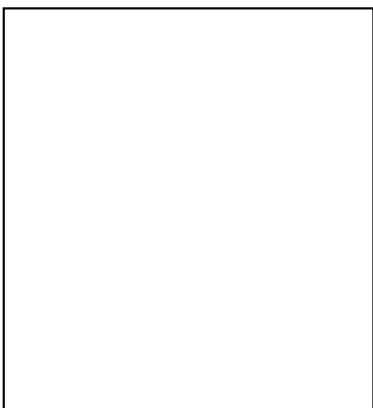
My animal eats dead things



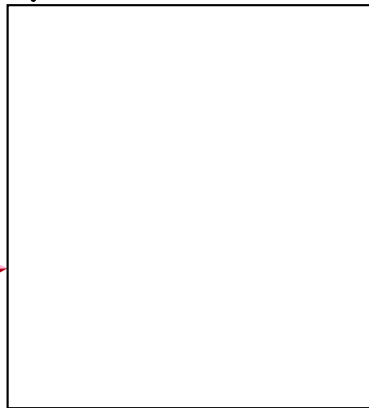
*It is a decomposer*

2.

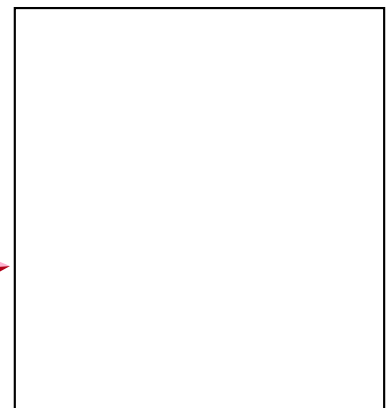
This is my animal's food chain



my animal eats this



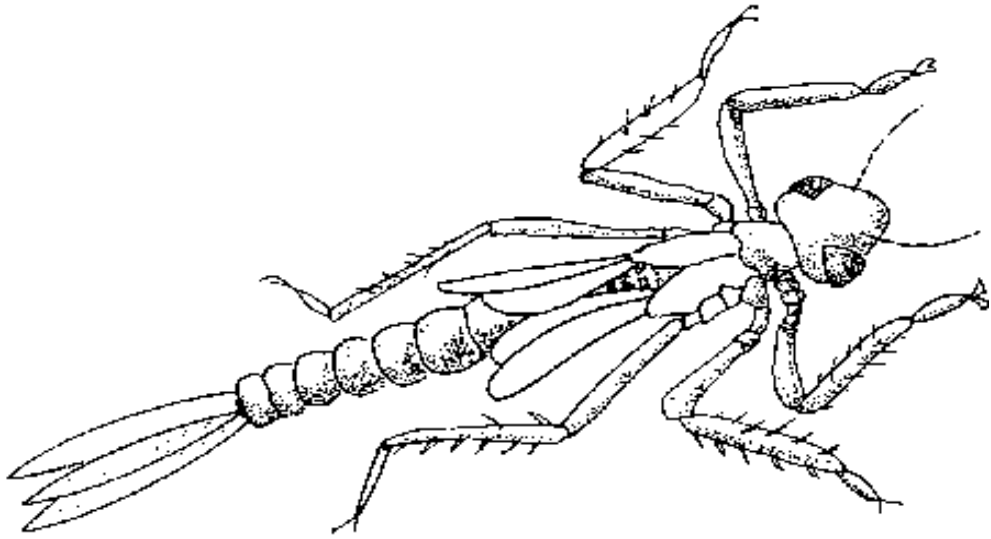
my animal



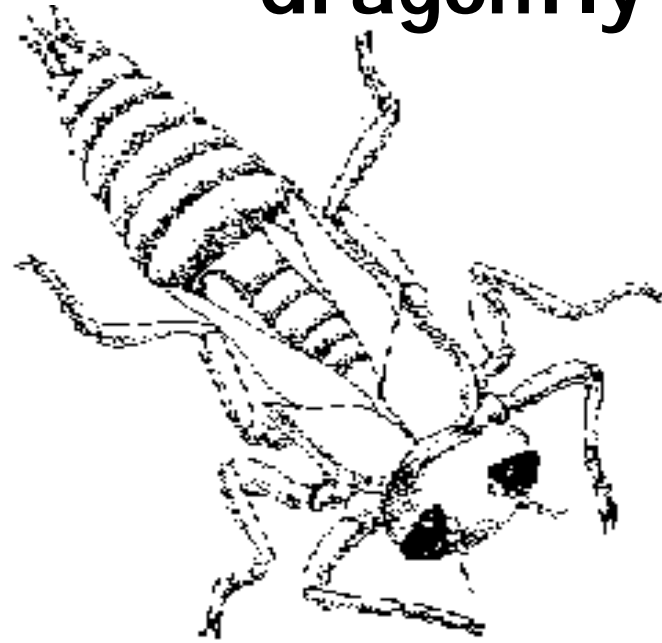
this animal eats my animal



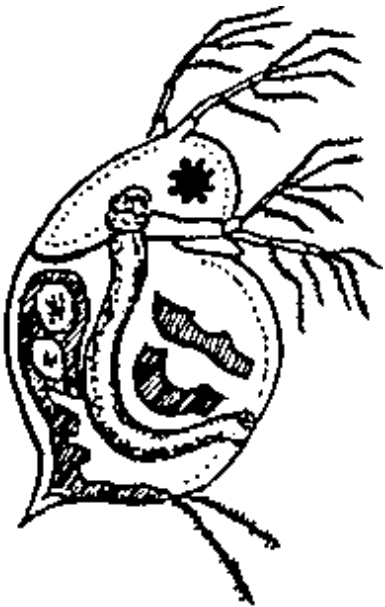
**damselfly nymph**



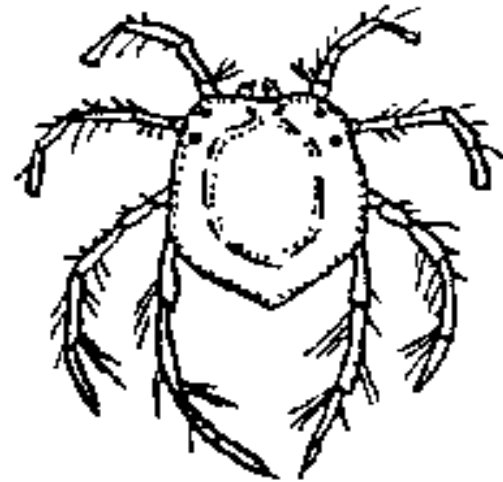
**dragonfly nymph**



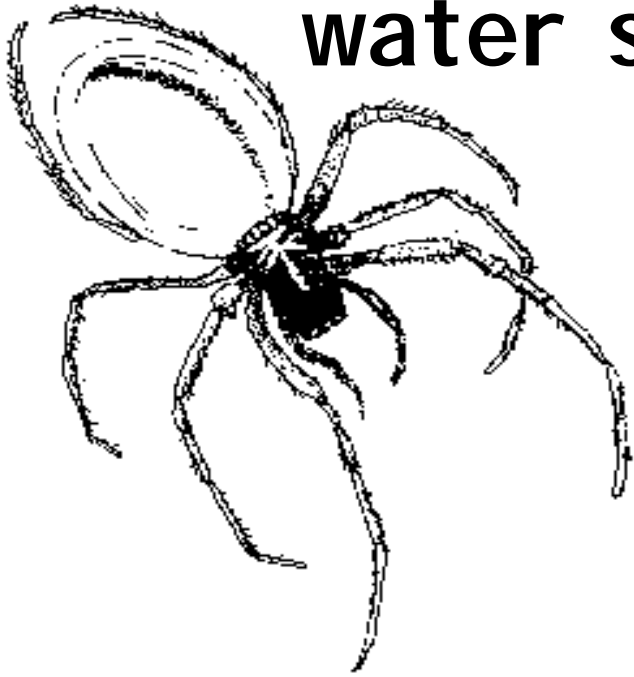
**water flea**



**water mite**

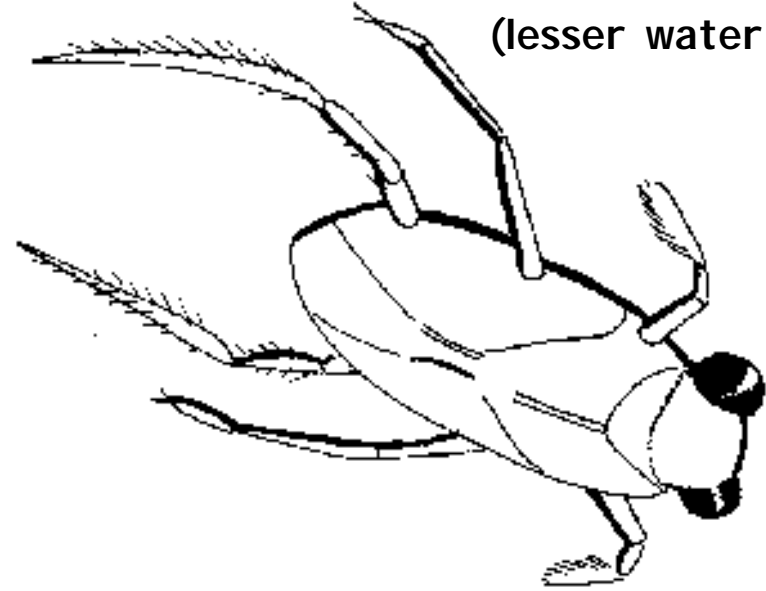


**water spider**

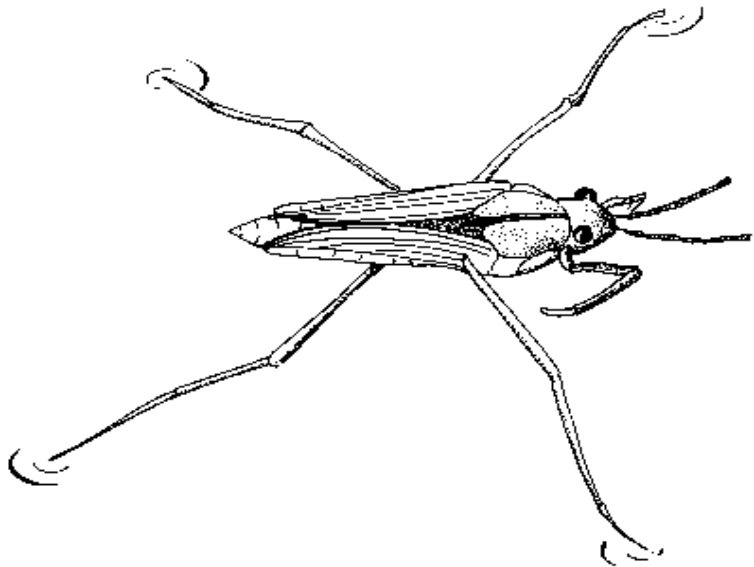


**water boatman**

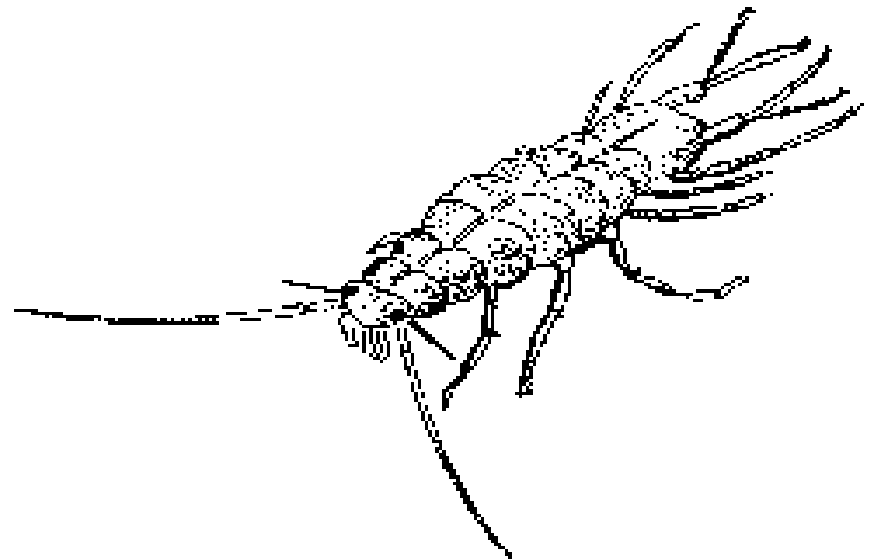
(lesser water boatman)

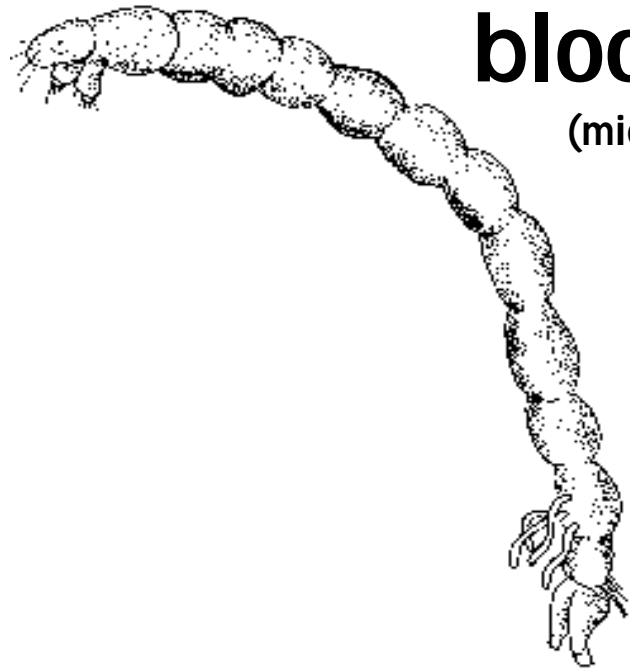


**pond skater**



**water louse**

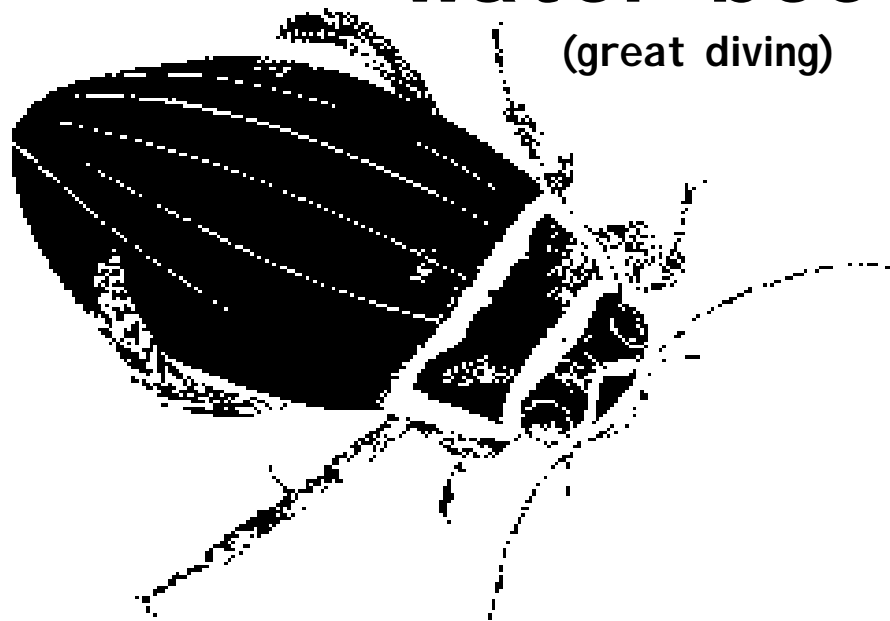




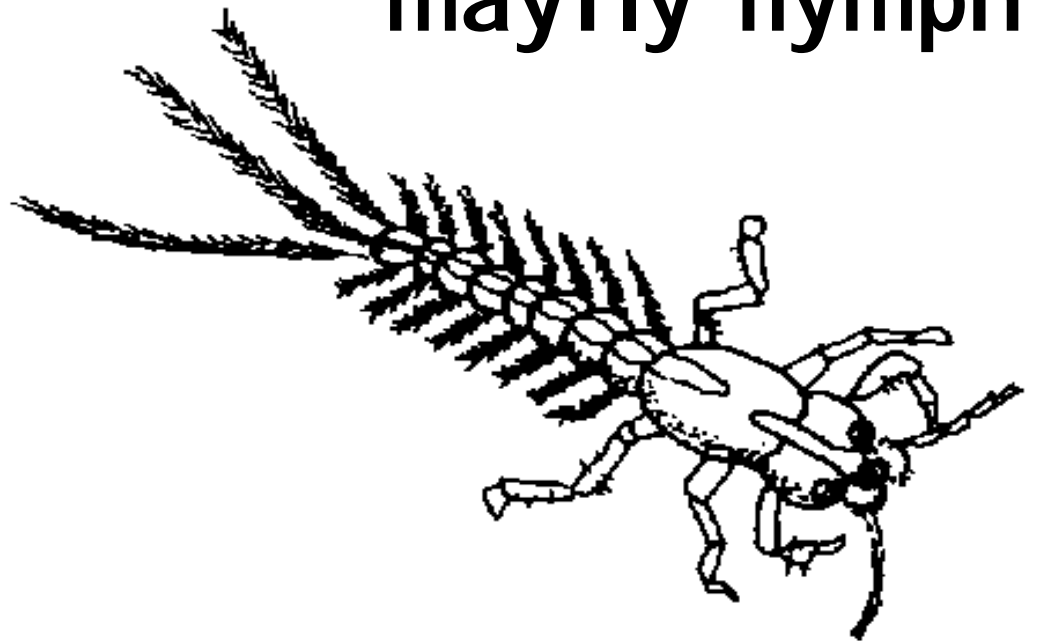
**bloodworm**  
(midge larvae)



**leech**

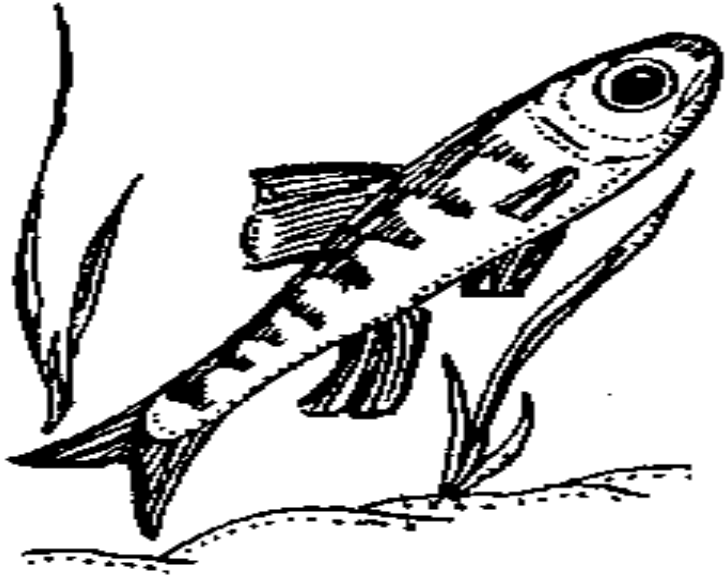


**water beetle**  
(great diving)

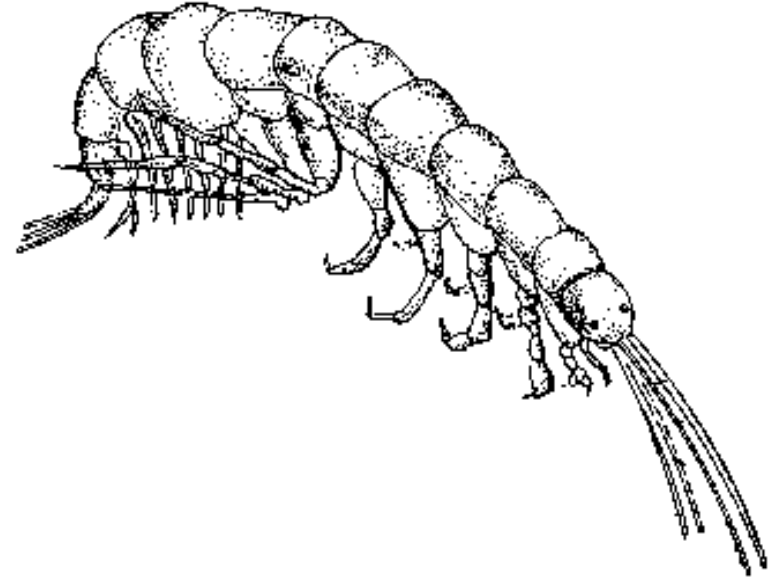


**mayfly nymph**

**small fish**



**freshwater shrimp**



**cyclops**

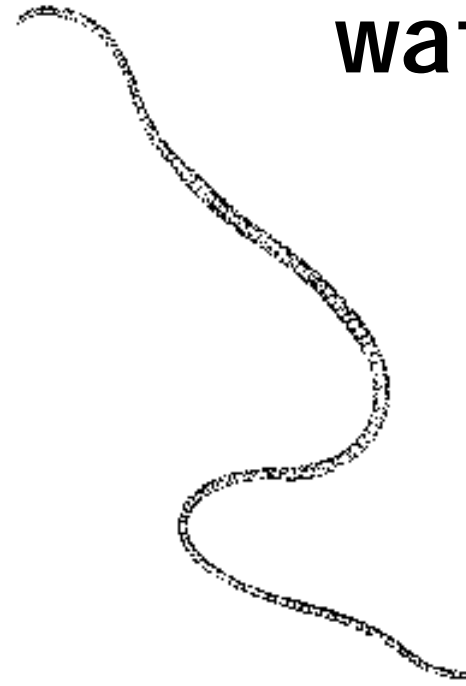


**pond snail**





**heron**



**water worm**

**insect larvae**

(large beetle larvae)

